



**B BARBERÁN**  
Solutions since 1929

**Jetmaster Series**   
digital printing machine

**Digital Printing  
Single Pass**

Roll to Roll printing



# RCM Roll to Roll

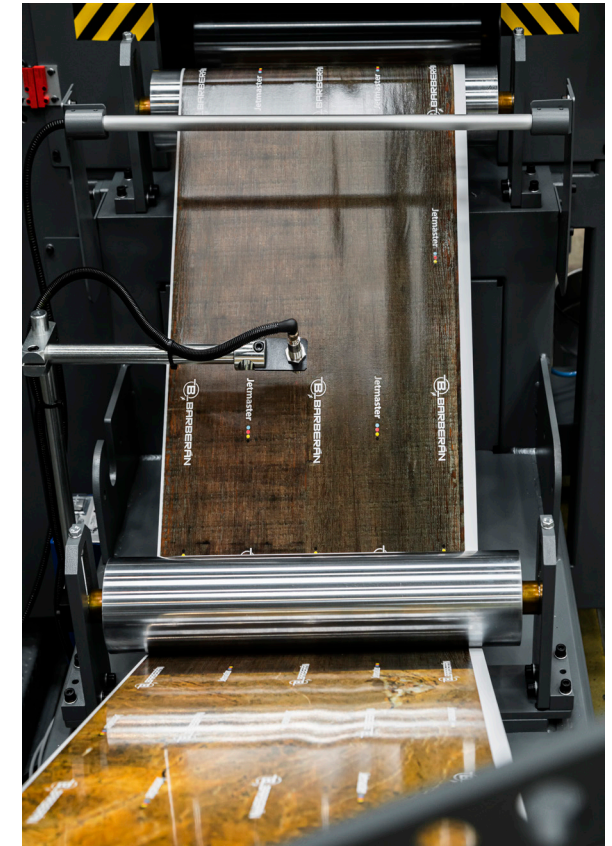
## digital printing line

Introducing the RCM Jetmaster, a revolutionary **roll-to-roll digital printing line**. This line is designed to print and apply a top coat, transforming raw roll materials into finished products. The Jetmaster digital printer is the centerpiece of the line, with an impressive 600 dpi resolution and the ability to print up to 6 colors. This is complemented by a **series of finishing modules**, each with a unique function.

We offer a comprehensive system with **three distinct modules** for coating applications, each designed to meet specific requirements and achieve exceptional results: Our first module is designed for **high-performance products**, particularly well-suited for applications such as flooring. It enables the application of a thick coating layer, ensuring optimal performance and durability. The second module is a standard **coating application** used for top coats. It provides a reliable and consistent finish, ideal for various applications. Our third module offers the option to combine with an engraved roller, allowing for the creation of uni-

que **finishing effects**, both haptic and optical textures. This module provides versatility and customization options to meet specific design preferences. All our modules are equipped with UV dryers featuring advanced temperature management systems. These systems ensure precise control over the foil temperature, guaranteeing optimal drying conditions for the coatings.

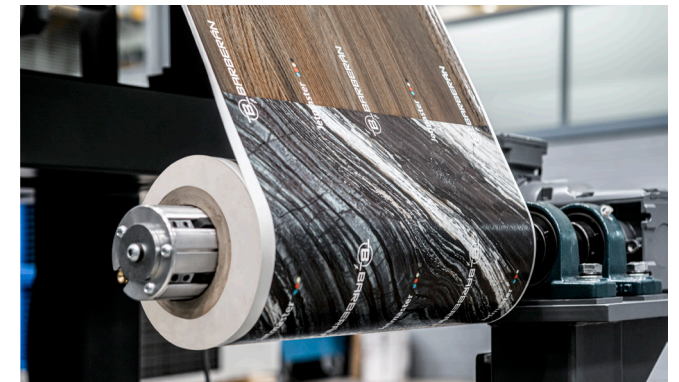
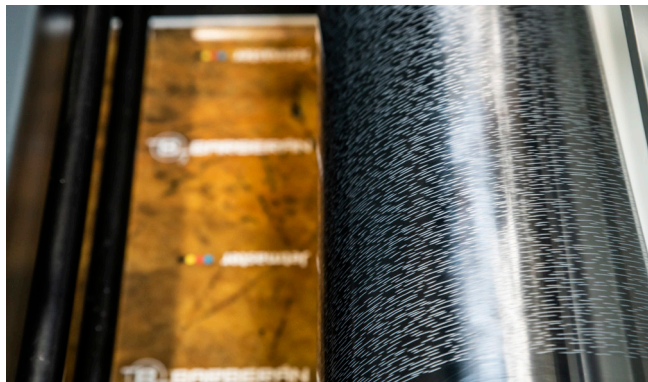
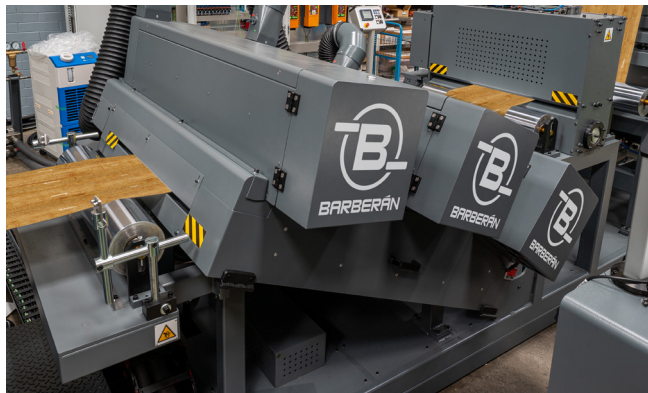
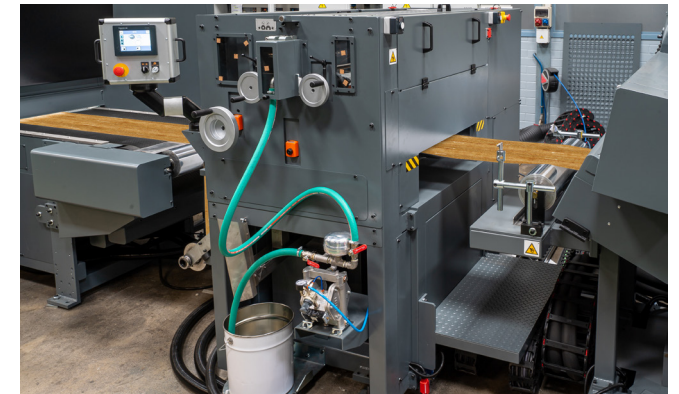
The line also features an unwinder with centering and balancing systems, as well as a rewinder with the same systems to ensure consistency from beginning to end. Thanks to its efficient design, there are no waiting times or extra handling operations. Orders can be processed immediately, and the finished product can be wrapped and ready to go on the very same day. The RCM Jetmaster is the perfect solution for **businesses that demand** high-quality printing and finishing capabilities with a quick turnaround time.





# RCM Roll to Roll

- Printing width of 630 mm.
- Capable of printing up to 6 colors at 600 dpi.
- Offers the option to add a station (consisting of 2 groups) for applying digital texture.
- Ideal for roll-to-roll printing.
- Modular design for different finishing options.





## Jetmaster Cloud

A centralized system for the Jetmaster work data analysis that shows the status and performance of the machine in detail from anywhere and at any time.

Jetmaster Cloud saves all the production data, cost and preventive maintenance data. You can use your browser to consult the detailed history of:

- **Production data:** printed meters, sheets, production times, uptime.
- **Production costs:** Waste, Ink Consumption.
- **Incidents:** Alarms, Warnings.

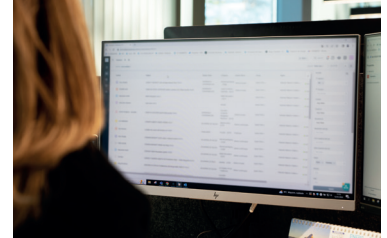


## Service Desk



Service Desk is a new service-oriented platform for our customers, based on incident management and spare parts ordering to facilitate and streamline each case in the most optimal way.

This platform will allow all spare parts orders to be placed and will provide an online incident management system as well as a direct communication system with our specialized technicians.



## Pomelo Hub

Pomelo is a community of professionals in the industrial sector that through collaborative interactions in the network can share experiences and acquire knowledge by asking other professionals and technicians such as engineers, suppliers, machine owners, colorimetry gurus, experts etc. Share and acquire new knowledge!



Location:  
Castelldefels  
Barcelona



More than  
27.000 m2



Over 190  
professionals



Certified  
quality system  
by TUV



Export quote > 90%

[www.barberan.com](http://www.barberan.com) • [www.jetmasterseries.com](http://www.jetmasterseries.com)



© Copyright – Barberan 2023. Registered in Safecreative. (<https://www.safecreative.org>)  
Register title: RCM Roll to Roll handout.  
Register Date: 15/05/23. Author Barberan S.A.

We reserve us the right to introduce modifications according to the new technical developments. The details, colours and equipments of the illustrations are only for information purposes. As the technical details or equipments can vary, please consult.



**Jetmaster Series**   
digital printing machine

 **DEERBLUE**  
Embossing In Register Process

 **POMELO**  
HUB  
Collaborative Platform

Pol.Ind. "CAMÍ RAL" C/.Galileo 3-9  
08860 Castelldefels - BARCELONA - SPAIN  
Phone: (34) 93 635 08 10