



Jetmaster Series 
digital printing machine

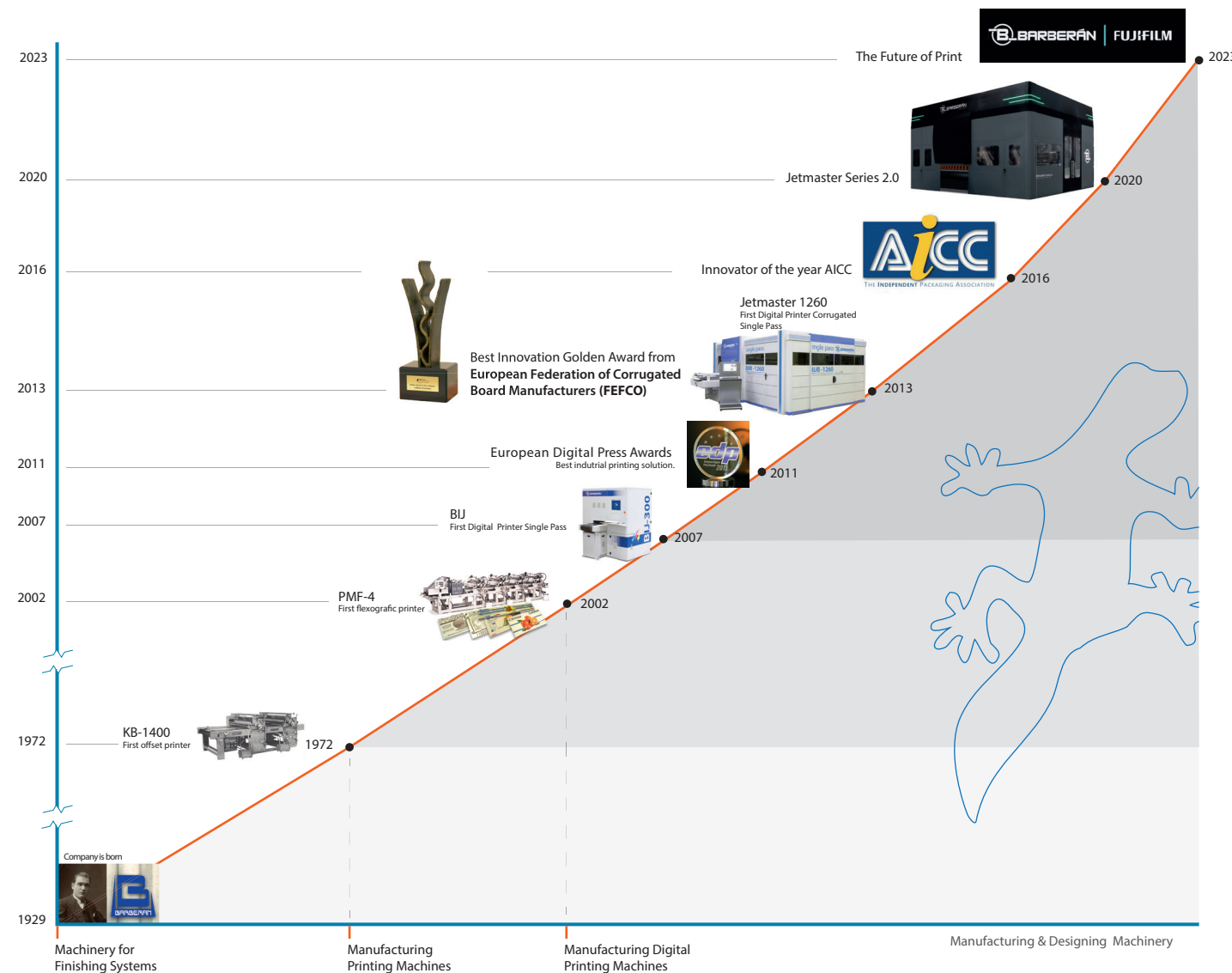


**Digital Printing
Single Pass**

Welcome to Barberan's

Evolution of Print

For almost two decades we've been designing and manufacturing cutting edge digital printing systems for different market segments. Continuous developments and using of the latest available components and technology keeps the Jetmasters at the forefront of singles pass digital printing solutions.



Single Pass Technology

All Barberan digital presses are based on the single pass technology aiming for the highest print quality at industrial speeds. The Jetmasters are available with speeds from 20 up to 120 m/min, 4 or 6 colors, single or double print row.

Approved product suppliers:

SAKATA INX
Visual Communication Technology

Kao Chimigraf

TOYO INK

TIGER

TEKNOS

KLUMPP
COATINGS



Digital Printing Division



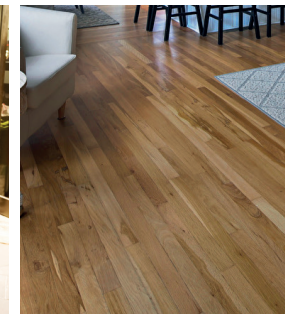
Corrugate



Deco



Displays & Signage



Flooring

We can work with multiple kind of substrates and make sure our Jetmaster adapts to the customer's needs. (e.g. furniture, displays, packaging, plastics, finish foils etc.)

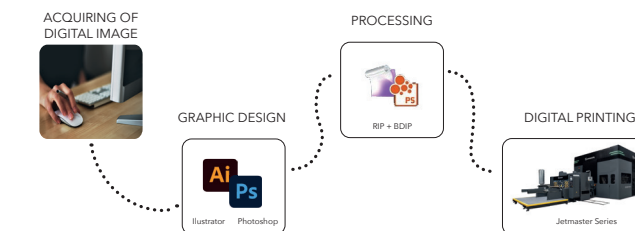
Our Team

A great team of professionals from all over the world ensure our clients receive the best training and service.



Printing Processes

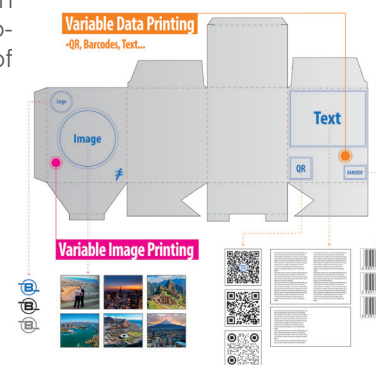
Forget about rollers and stencils used in the conventional printing technologies. A digital print file is uploaded to the machine's platform, passing through the RIP which converts it into a print file and we're ready to go.



Variable Data System

Software for high productivity solutions that allows to merge personalized messages, images, barcodes or QR on a static base image in real time at high printing speed.

The system has been entirely developed by Barberan considering the peculiarities of a large format Single-Pass system is a fantastic tool for a wide range of applications in the printing industry. With VDATA technology you can turn a simple box into something unique and of great added value.



eg: Corrugated cardboard box

G7 Certification Ready



Jetmaster printers are ready to achieve the strict G7 requirements in order to assure complete control of the entire graphic production process, from proof to print, guaranteeing maximum accuracy and consistency of color matching and quality.

Master Vision

Save time and material with our electronic Inspection system based on artificial vision to automatically calibrate the Jetmaster printer.

MasterVision allows you to reduce the time needed to prepare the machine and keep it in the best conditions during production. The system is able to analyze the degree of calibration of the machine, detect defects and inform the G6 machines software to introduce the necessary countermeasures, both at setup and production time.

Mastervision is modular, adapting to the printing width of the machine and the specific needs of the production process.





Designs by IMAGINK DESIGN

The DeepBlue Installation

The production line for the DeepBlue EIR technology consists out of two digital presses , the first to print the design and the second to apply the transparent inks which will enable us to create the negative texture. Both printers are perfectly synchronized enabling us to achieve an in register embossing. Roller coaters are used to apply UV based base coats , SIS or ALOx wear layers and scratch resistant top coats.

Panel Preparation (phases 1 2 3)

Before starting the printing process, panel needs to reach the physical properties of whiteness, surface tension and sealing optimized to achieve the highest color performance with the correct quantity of ink. This process stabilizes production quality reducing variations of the substrate properties.

Applications

Our solution provides the best performances required by different applications and markets.



Decoration



Flooring



Furniture

Panel Phases

Multiple steps are necessary to achieve the optics and haptics that DeepBlue can replicate, each step has a different purpose: wear resistance, glossiness, sharpness and depth.. to finally replicate the natural wood or stone effects.

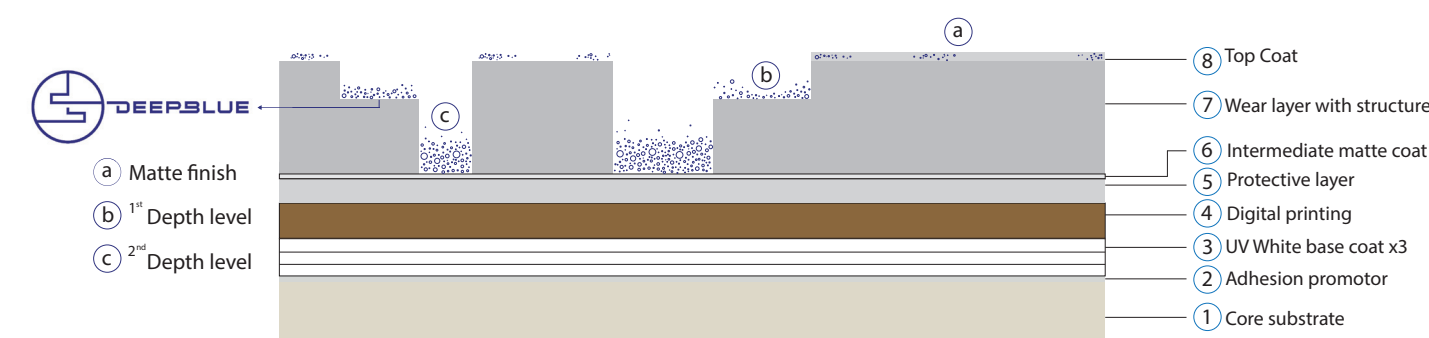


The DeepBlue Technology

The DeepBlue game-changing technology is the first of its kind, capable of imitating to perfection any type of natural wood or stone design. Thanks to the realistic reproduction of both the optics and haptic DeepBlue printed products are hard to distinguish from real wood or stone.

Why DeepBlue?

DeepBlue technology will allow you to respond in a quick way to the market demands, personalize designs, produce small – medium and large batches without extra cost, eliminate inventories and waste in a process that allows to deliver the maximum quality with a low environmental impact.



Cleaning & Acconditioning 1 2 3

Roller coater units for the application of UV or water based adhesion primers, sealers if required and pigmented basecoat in order to prepare the board for the digital printing. All UV dryers are equipped with smart energy control that allow up to 80% consumption savings.

Digital Printer 4

Single-Pass Digital press for widths up to 1890mm, equipped with 6 colors, our Jetmaster printers can print a wide gamut of colors with special homologated UV ink combinations for better quality and reduced metamerism.

Texturing Base Coat 5 6 7

Roll coaters for the application of a wear layer which are used to create the DeepBlue EIR.





DeepBlue in Figures

20 to 200 microns texture depth

Sharpness options for soft or rough texture generation

Nonbinary texture / Multiple depth levels

Performance up to AC5 or Class 34

Optimized residue management

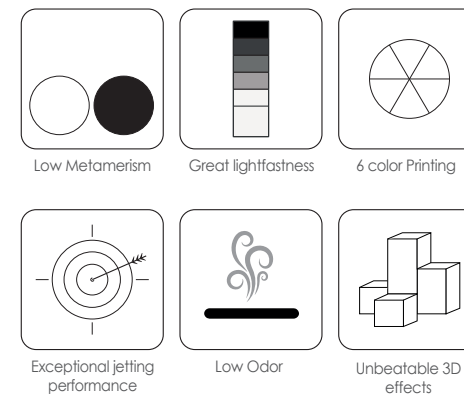
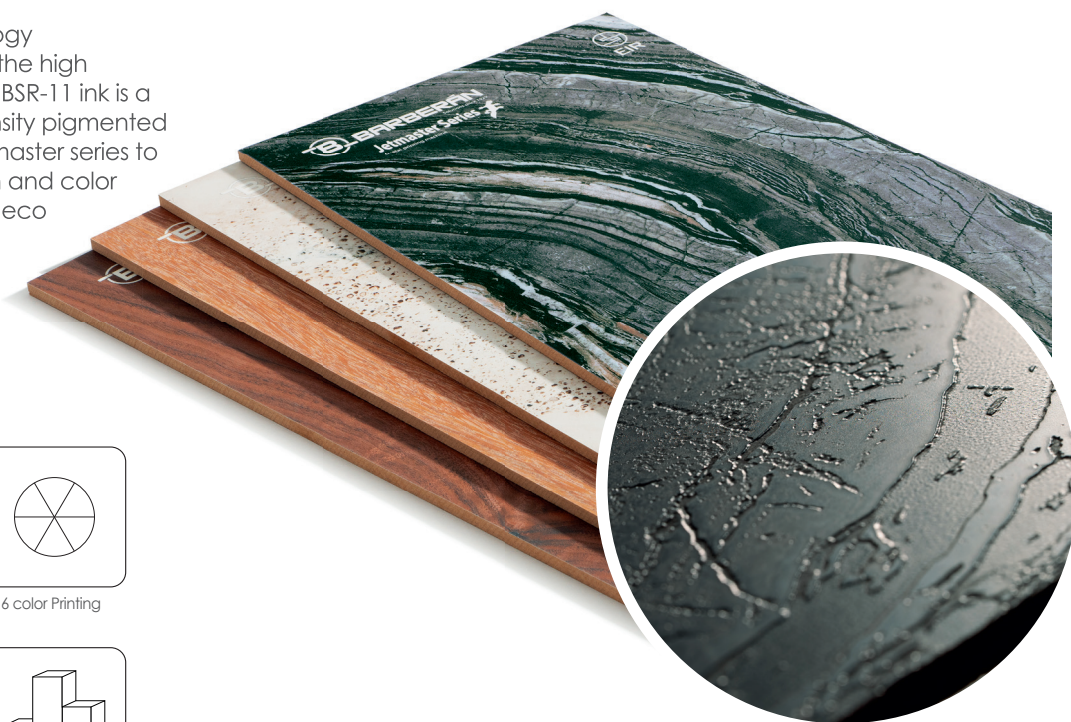
Excimer or EB compatible



*SPC floor substrate



Barberan's EIR digital technology DeepBlue is created by using the high performance Sakata inks. The BSR-11 ink is a premium UV curable high density pigmented ink set, formulated for the Jetmaster series to achieve an optimum dot gain and color performance needed in the deco applications.



Barberan DeepBlue is available with Jetmaster printers 1260, 1610, 1750 & 1890 mm wide.

DeepBlue - EIR press 8

Jetmaster Single-Pass digital press synchronizes digital patterns with the previously printed design in order to create a texture effect. It prints using a specially formulated ink modifying the properties of the coating in the pre-selected areas.

Texture Revealing 9 10

In this phase the sublimation of the DeepBlue is imitated and texture will be revealed in a succession of cleaning procedures before applying the top coat as the last finish layer.



*Shown figure is for orientation purposes only.

Powered by
BARBERAN
Solutions since 1929

DeepBlue partner
SAKATA INX...
Visual Communication Technology
www.inxinternational.com

Licensing by
UNILIN
www.unilintechnologies.com

Jetmaster Cloud

A centralized system for the Jetmaster work data analysis that shows the status and performance of the machine in detail from anywhere and at any time.

Jetmaster Cloud saves all the production data, cost and preventive maintenance data. You can use your browser to consult the detailed history of:

- **Production data:** printed meters, sheets, production times, uptime.
- **Production costs:** Waste, Ink Consumption.
- **Incidents:** Alarms, Warnings.

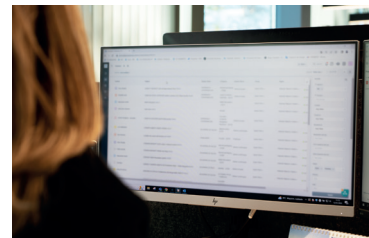


Service Desk



Service Desk is a new service-oriented platform for our customers, based on incident management and spare parts ordering to facilitate and streamline each case in the most optimal way.

This platform will allow all spare parts orders to be placed and will provide an online incident management system as well as a direct communication system with our specialized technicians.



Pomelo Hub

Pomelo is a community of professionals in the industrial sector that through collaborative interactions in the network can share experiences and acquire knowledge by asking other professionals and technicians such as engineers, suppliers, machine owners, colorimetry gurus, experts etc. Share and acquire new knowledge!



Location:
Castelldefels
Barcelona



More than
27.000 m2



Over 190
professionals



Certified
quality system
by TUV



Export quote > 90%

www.barberan.com • www.jetmasterseries.com



© Copyright - Barberan 2023. Registered in Safecreative. (<https://www.safecreative.org>)
Register title: Digital Printing Deepblue EIR.
Register Date: 19/04/23. Author Barberan S.A.

We reserve us the right to introduce modifications according to the new technical developments. The details, colours and equipments of the illustrations are only for information purposes. As the technical details or equipments can vary, please consult.



Jetmaster Series
digital printing machine



Pol.Ind. "CAMÍ RAL" C/.Galileo 3-9
08860 Castelldefels - BARCELONA - SPAIN
Phone: (34) 93 635 08 10